

Morbark Chiparvestor

Product Information

Model 22RXL & 30



Having established the standard in whole tree chipping equipment over the past three decades, Morbark maintains that high standard with the Models 22RXL and 30 Total Chiparvestors. In terms of productivity, chip quality and return on investment, these units are clearly recognized as the best whole tree chippers money can buy.

With Morbark's patented three-wheel feed system and infeed beds, wood flow is synchronized and fed to the chippers at a controlled rate, producing uniform, high quality chips.

Morbark Chiparvestors are superior in several categories, including ease of transport, strength and durability, hydraulic system functions and overall quality control. Extending the frame and goose neck while relocating and expanding fuel and hydraulic tanks resulted in improved weight distribution and better compliance with interstate bridge laws. The infeed area is beefed up with T-1 steel for more strength and longer life with less weight, and an adjustable deflector chute means improved work site safety.

From improved painting processes and ultrasonic testing of chipper discs to in-depth final inspection by an independent team, Morbark's commitment to quality control is evident in the Models 22RXL and 30 Chiparvestors.



Morbark, Inc.

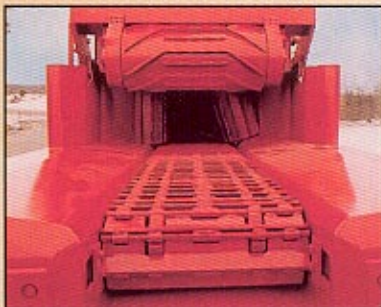
8507 S. Winn Road
P.O. Box 1000
Winn, MI 48896

(800) 831-0042
(989) 866-2381
Fax (989) 866-2280

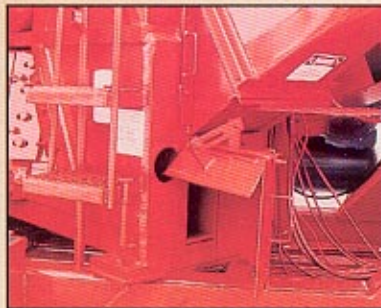
E-mail: inquire@morbark.com
Web site: www.morbark.com



The infeed bed and chain is beefed up with T-1 steel for durability and longer life with less weight.



An adjustable deflector chute on the dirt separator improves work site safety.



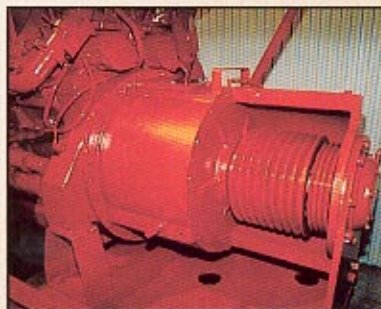
The gooseneck is extended 6 feet for improved weight distribution and better compliance with interstate bridge laws.



Relief valves are located directly below solenoid valves. This eliminates significant hydraulic hose and provides easy service access.



More reliable performance and longer clutch life are delivered with the spread bearing clutch design.



GENERAL

Overall length		38'
Transport height		13'6"
Width		10'6"
Weight	Model 22RXL	70,000 lbs.
	Model 30	72,500 lbs.
Tandem axle trailer		44,000 lb. suspension
Tires (8)		295 x 75R x 22.5, 14 ply radials
Brakes		air
Stabilizer legs (2)		hydraulic
Towing arrangement		fifth wheel
Engine		Caterpillar or Cummins
Horsepower		630-1,000
Drive		belt
Fuel capacity		300 gallon
Hydraulic oil capacity		200 gallon
Auxiliary air compressor		11 HP

CAB AND LOADER

Enclosed weatherized operator's cab tilts hydraulically for transport with deluxe 6-way adjustable seat.

Morlift Model 1000 knuckleboom loader, 25' reach, 210° swing, by-pass grapple, lift capacity of 20,000 lbs. at 10 feet.

Joy stick controls for loader

Combination air conditioner/heater

FEED SYSTEM

3 wheel hydraulic feed system

30" wide x 10' long Cat chain infeed bed

Model 22RXL: 2 16" dia. x 23" long side feed wheels and 1 20" dia. x 47" long top feed wheel.

Model 30: 2 10³/₄" dia. x 25 ³/₄" long side feed wheels and 1 20" dia. x 47" long top feed wheel.

CHIPPER

Model 22RXL: 22" diameter capacity, 75" 3-knife chipper disc, LH rotation

Model 30: 30" diameter capacity, 83" 3-knife chipper disc, LH rotation

Chip sizes: ⁵/₈", ³/₄", ⁷/₈", 1", 1¹/₄", 2"

Hydraulic chipper hood for knife access

DISCHARGE SYSTEM

Dirt separator with deflector and quick change

Discharge spout swivels and telescopes hydraulically.

OPTIONS

4-knife chipper disc

Discharge spout extension

Electronic RPM sensor

Rear Stabilizers

Espar Heating System