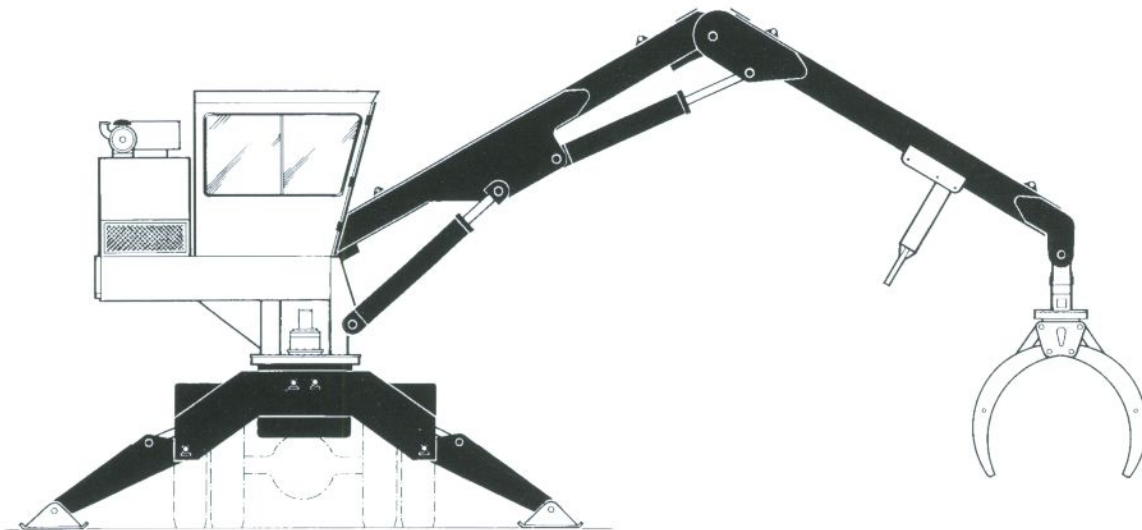


Timberjack

# 330

Knuckleboom Loader



## Technical Data

### Engine

Models/Cyls. - Cummins 6BT 5.9,  
6 cyl. turbo diesel  
Max hp - 148 hp (110 kW) @ 2200 rpm  
Fuel Tank Capacity - 75 U.S. gal. (285 L)

### Hydraulic System

Lift Capacity (rated) 23,700 lbs. @ 10 ft.  
(10 750 kg @ 3 m)  
Pump Drive - Direct  
Main Pumps - Triple gear pump assembly  
55-45-30 gpm (208-170-114 L/min)  
Systems Pressure - 2300 psi (15 860 kPa)  
Control Valves - Stack type Commerical  
70 gpm rating (265 L/min) rating  
Cylinders - (2) Main - 6" (152 mm) bore,  
3" (76 mm) rod-solid  
(1) Jib - 7" (177 mm) bore, 3.5" (89 mm)  
rod-solid  
(4) Stabilizer - 6" (152 mm) bore, 3" (76 mm)  
rod-solid (with lock valves)  
Filtration - 10 micron return line w/25 psi  
(172 kPa) bypass with visual indicator  
Cooler - Hayden, high capacity  
Reservoir - 100 U.S. gal. (378 L)  
(2) suction screens - 100 mesh (1) with 3  
psi (21 kPa) bypass

### Electrical System

Alternator - 12 volt, 63 amp, self-energizing  
Batteries - (2) 12 volt

### Knuckleboom

27 ft. (8.2 m), heavy wall construction,  
56,000 psi (386 000 kPa) yield w/bolt on  
adjustable heel bar, aluminum bronze  
bushings, self-aligning bearings/all  
cylinder mounting points,  
3-1/2" (89 mm) pin - knuckle, 3" (76mm)  
pin - hinge 3" (76 mm) pin - all hydraulic  
cylinders

### Controls

Manual lever hydraulic controls

### Operator's Cab

Fully enclosed. Insulated. 40" (1 016 mm)  
x 60" (1 524 mm) with sliding door,  
sliding window, tinted safety glass. Front  
windshield washer/wiper. Heater. Fan.  
Horn. Deluxe cloth, fully adjustable  
suspension seat w/seat belt and armrests.  
Instrument panel.



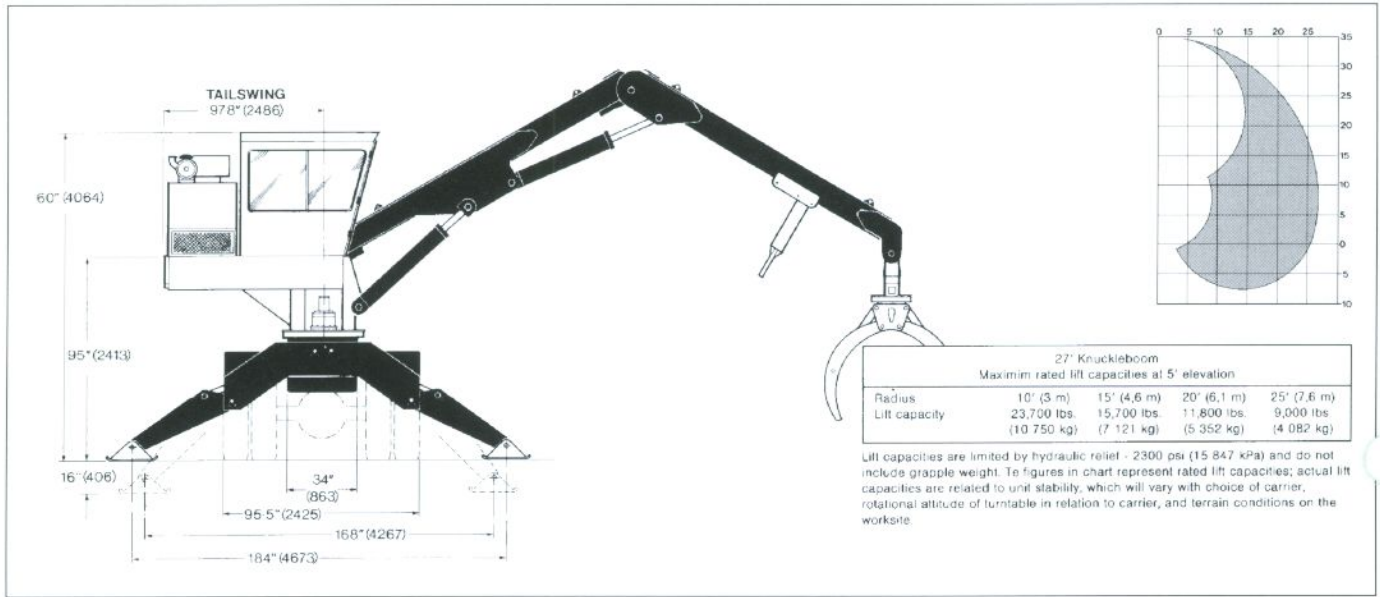
**Swing System**  
 Rotation - 360° continuous  
 Speed - 7 rpm  
 Drive - Two stage planetary gear box  
 w/gear motor (greaseable from cab)  
 Bearing - 42" (1 067 mm) O.D.  
 hardened gear

**Weight** (standard equipment)  
 23,336 lbs. (10 585 kg)

**Standard Equipment**  
 Front windshield guard. Fire extinguisher.  
 Operator and maintenance manuals. Grease  
 gun. Bolt on adjustable heel bar. Truck/trailer  
 mounting kit.

**Optional Equipment**  
 Engine: Cummins 6BTA 5.9 - 170 hp (127  
 kW) @ 2300 rpm. Pilot operated joystick  
 controls. High volume remote hydraulics (for  
 operating: barsaw slasher, delimeter/topping  
 saw, or both). 29 ft. (9 m) Knuckleboom with  
 bolt on adjustable heel bar. Air conditioning.  
 Truck/trailer mounting kit.

© Timberjack and the donkey symbol are registered trademarks of Timberjack Inc. Printed in Canada by BP-11M-5-99



The manufacturer reserves the right to make changes or add improvements at any time without incurring any obligation to make such changes on machines manufactured previously.

# Timberjack

Doing more

[www.timberjack.com](http://www.timberjack.com)